

IBOOT-G2+

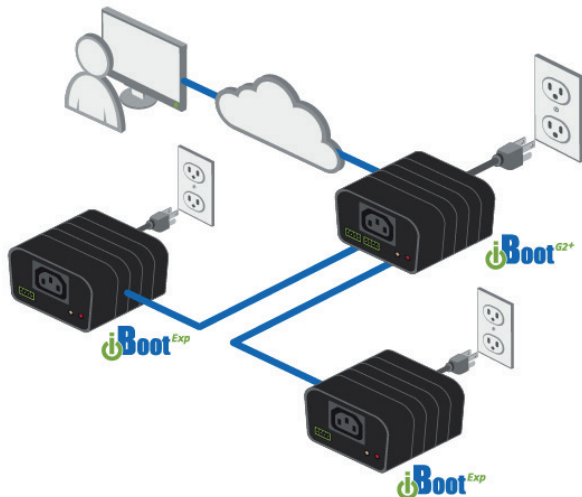
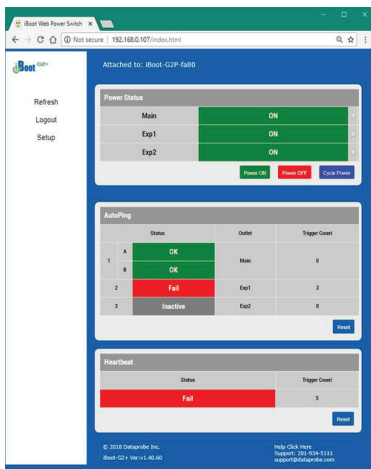
EXPANDABLE SINGLE OUTLET REMOTE POWER CONTROL

Easiest Way to Minimise Downtime

Minimise downtime to keep your critical systems running and your customers happy. iBoot provides automatic and web controlled power switching to quickly get you back online fast.

This model is equipped with 2 outlet expansion ports to protect even more devices. If you are looking for a basic product with a limited amount of features, please check out the iBoot-G2.

Control one or many iBoots with a single sign-on using the free iBoot Cloud Service. Just log in and you are instantly in control of as many locations as necessary.



PRODUCT OVERVIEW



Top Features

- **Simple Web Browser Operation**
 - Just point your browser to the iBoot, login and you are one click away from bringing that failed system back to life.
 - All setup functions are easy to configure from the browser
- **Free Cloud Service**
 - Manage an unlimited number of iBoots from a single login
 - Eliminate port forwarding and dynamic DNS issues
 - More secure with outbound connections only
- **2 Expansion Ports**
 - Includes 2 customisable external I/O to expand to 3 outlets or for outlet control
- **Plus**
 - USB port for direct serial control and programmable shutdown prior to auto power reboot
 - Includes additional autoping triggers

Additional Features

- **Automatic System Restoral**
 - AutoPing detects network or equipment outage and takes immediate action to restore your network or device. Real time scheduling to have a fresh reboot each morning or minimise power waste at night.
- **IP Addressed - 10/100 Base-T**
 - Use on any Ethernet IP Network, (public or private) Supports DHCP and alternate ports for Web Access.
- **Easy Integration**
 - Control iBoot-G2+ directly from your software application, web page or network management scheme. Sample code in several languages are provided. Configuration tools make it easy to deploy a large number of units across your organisation.
- **110/220 VAC Operation**
 - Auto ranging power input. Deploy iBoot-G2+ anywhere in the world. iBoot-G2+ uses IEC320 Connectors and includes line and extension cords for North America.
- **12 AMP Switching**
 - Current for most Servers, Routers, Kiosks, etc. (10 Amps at 220 VAC)
- **External I/O**
 - Contact Closure or Open Collector

Specifications

- **Physical:** H x W x D: 2.0" x 3.2" x 4.2" (60mm x 82mm x107mm)
- **Operating Temperature:** 0 to 50 °C
- **Power:** 105 - 240 VAC Auto Ranging
- **Power Switching:** 12 Amps at 105-125 VAC | 10 Amps at 210-240 VAC Includes cables for North America (NEMA 5-15)
- **Network:** 10/100 Base-T, Autosensing Uplink/Downlink | Cat 5 Cable Included 6'/2m long
- **Serial:** USB Mini-B COom Port, 9600 8 N 1, cable included
- **Reliability:** MTBF 320,000 Hours | Operating Cycles 10,000,000 Mechanical. 100,000 Maximum Load
- **Security:** Dual Password Protected, User and Admin and Custom Web Port
- **Compliance:** RoHS/WEEE FCC Part 15 Class B AC Versions UL/cUL UL60950 Listed I.T.E File No. E225914 CE Directives 89/336/EEC, 92/31/EEC and 93/68/EEC

Subject to Change Without Notice

Ver: EDPIBG2P0823.1

Tel: 01376 510337 - E-mail: sales@edpeurope.com