

CO-LOCATION SERVER RACK

600W 4 DOOR COLO CABINET

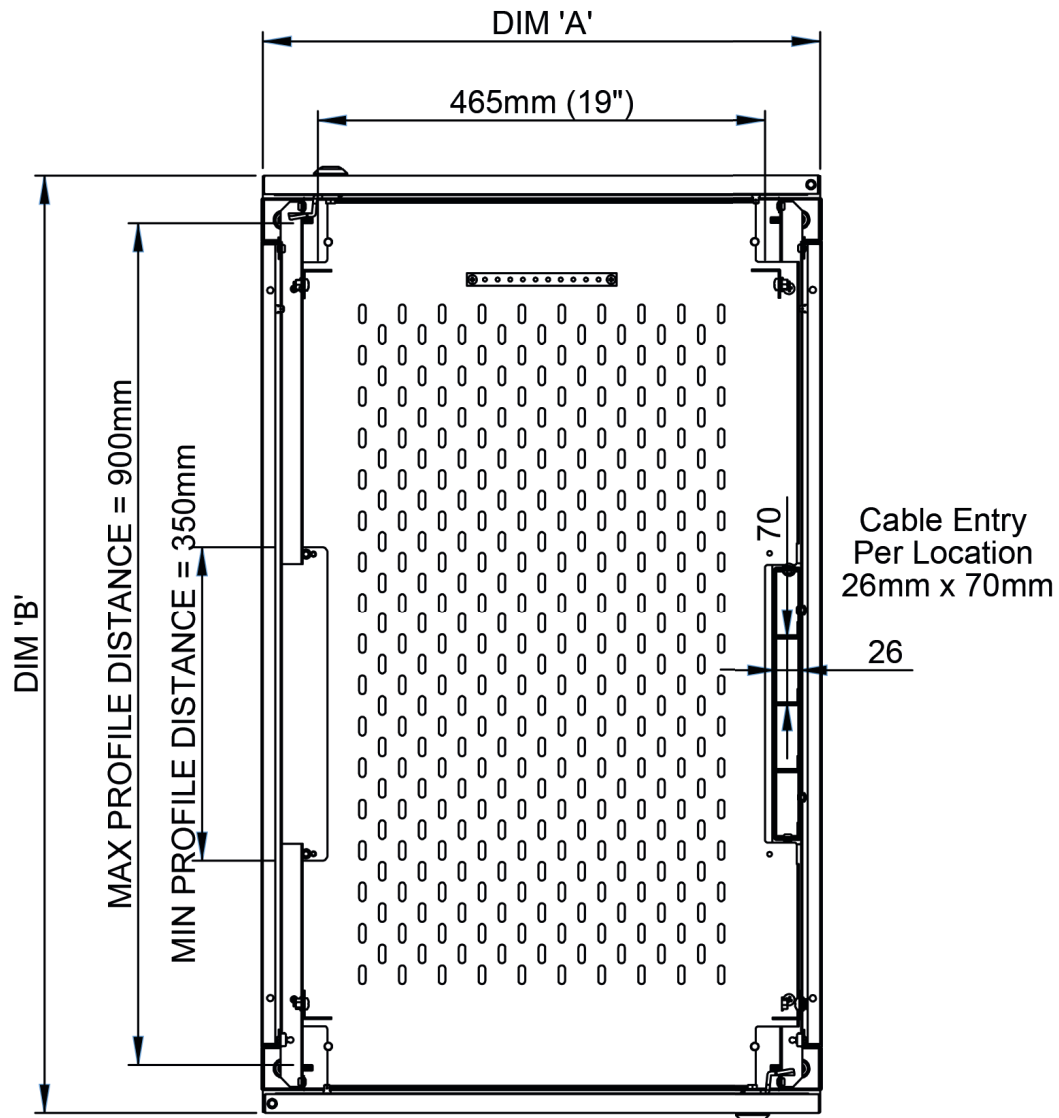
PRODUCT OVERVIEW



Features & Benefits

- 42U or 47U Height
- 2 Pairs of fully adjustable 19" mounting profiles in each compartment
- Front & rear mesh doors 80% open area
- Each compartment to have its own key number or combination lock
- Door panels are fully removable
- Doors can be hinged left or right
- Side panels removable, with internal latching
- Cabinets are supplied fully assembled
- All panels & doors fully earthed
- 70mm x 26mm cable access hole per Co-Location
- Optional cable trunking can be mounted either side
- Vented centre partition shelf between compartments
- 10 Way x 80A earth bar fitted in every compartment
- Cabinet powder coated black as standard, other colours available on request
- Conforms to the following standards:
 - IEC 297-2
 - DIN 41494-7
 - DIN 41491-1
 - BS 5850/3192

Specifications



DIM 'A'	DIM 'B'	Compartment Size	Height
600mm	600mm	4 x 10U	1985 (42U)
600mm	600mm	4 x 11U	2207 (47U)
600mm	800mm	4 x 10U	1985 (42U)
600mm	800mm	4 x 11U	2207 (47U)
600mm	1000mm	4 x 10U	1985 (42U)
600mm	1000mm	4 x 11U	2207 (47U)
600mm	1200mm	4 x 10U	1985 (42U)
600mm	1200mm	4 x 11U	2207 (47U)



Accessories

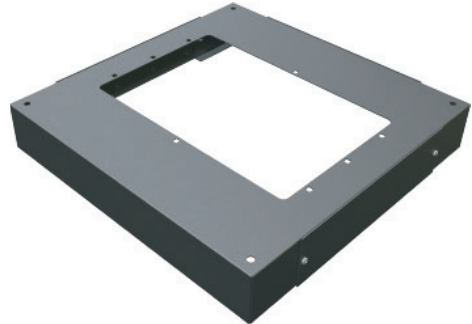
Modem shelves

available in 4 options



- 1U/190
- 1U/300
- 2U/300
- 2U/400

Plinth



19" Power Distribution Unit



Horizontally mounted PDU
19" 4 way
19" 6 way

19" 6 way shown only

Blanking panels

available in 4 options



- 1U
- 2U
- 3U
- 4U

Earthing kit



Cage nut kit



Castors

Medium Duty 300kg
Heavy Duty 600kg



Adjustable foot



