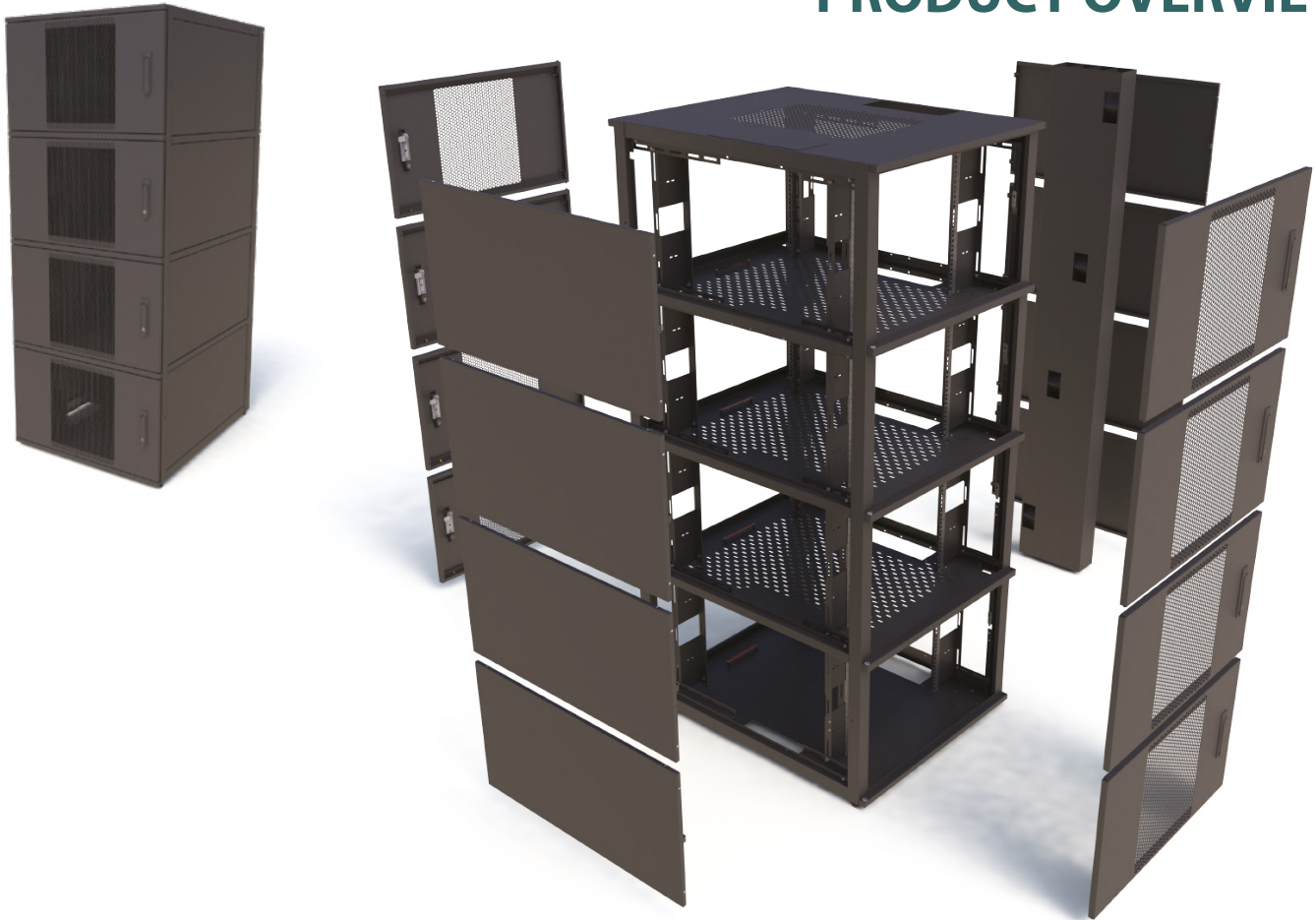


# CO-LOCATION SERVER RACK

## 800W 4 DOOR COLO CABINET

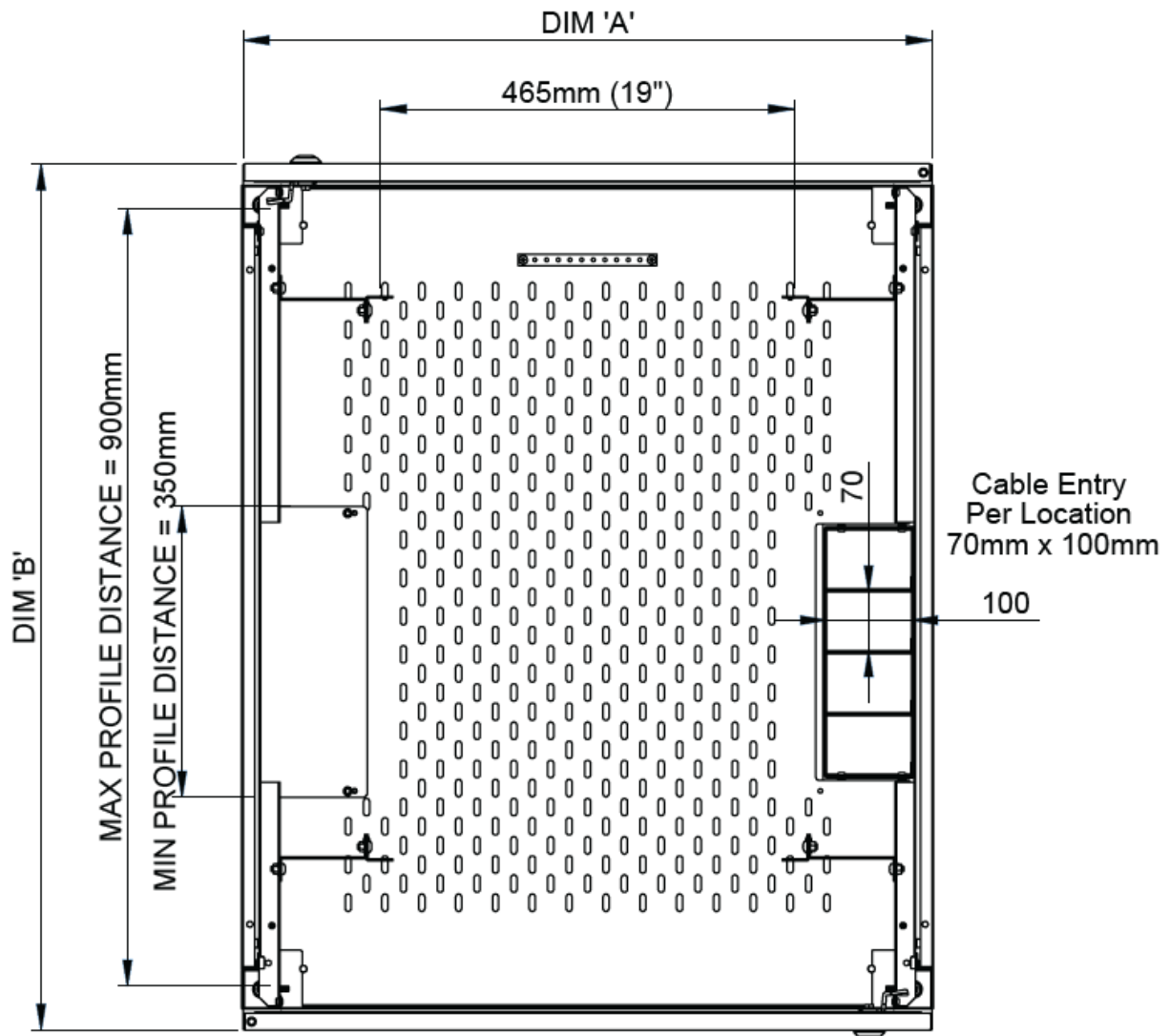
### PRODUCT OVERVIEW



### Features & Benefits

- 42U or 47U Height
- 2 Pairs of fully adjustable 19" mounting profiles in each compartment
- Front & rear mesh doors 80% open area
- Each compartment to have its own key number or combination lock
- Door panels are fully removable
- Doors can be hinged left or right
- Side panels removable, with internal latching
- Cabinets are supplied fully assembled
- All panels & doors fully earthed
- 70mm x 100mm cable access hole per Co-Location
- Optional cable trunking can be mounted either side
- Vented centre partition shelf between compartments
- 10 Way x 80A earth bar fitted in every compartment
- Cabinet powder coated black as standard, other colours available on request
- Conforms to the following standards:
  - IEC 297-2
  - DIN 41494-7
  - DIN 41491-1
  - BS 5850/3192

# Specifications



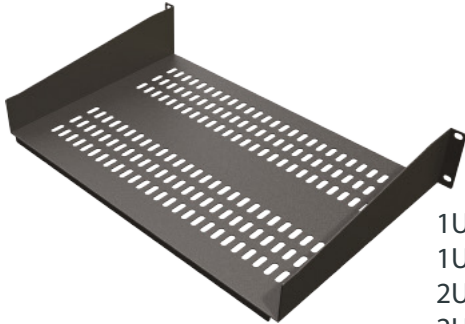
DIM 'A'	DIM 'B'	Compartment Size	Height
800mm	600mm	4 x 10U	1985 (42U)
800mm	600mm	4 x 11U	2207 (47U)
800mm	800mm	4 x 10U	1985 (42U)
800mm	800mm	4 x 11U	2207 (47U)
800mm	1000mm	4 x 10U	1985 (42U)
800mm	1000mm	4 x 11U	2207 (47U)
800mm	1200mm	4 x 10U	1985 (42U)
800mm	1200mm	4 x 11U	2207 (47U)



# Accessories

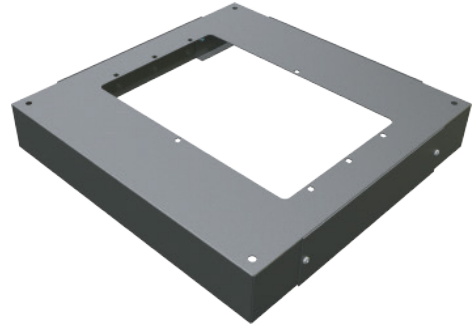
## Modem shelves

\*available in 4 options\*



- 1U/190
- 1U/300
- 2U/300
- 2U/400

## Plinth



## 19" Power Distribution Unit

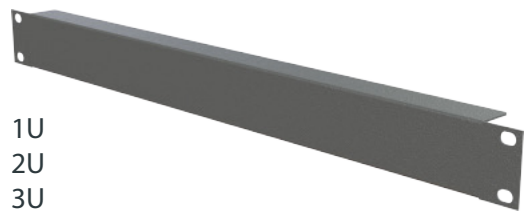


Horizontally mounted PDU  
19" 4 way  
19" 6 way

\*19" 6 way shown only\*

## Blanking panels

\*available in 4 options\*



- 1U
- 2U
- 3U
- 4U

## Earthing kit



## Cage nut kit



## Castors

Medium Duty 300kg  
Heavy Duty 600kg



## Adjustable foot

