

DATA CENTRE SOLUTIONS

PRODUCT CATALOGUE 2024



About EDP Europe

EDP Europe Limited has been delivering high-quality, innovative infrastructure solutions to the IT & Data Centre industry across the UK and EMEA for more than 33 years.

In today's data driven economy, demand for increased data processing power, data storage, and Cloud services is driving the need for more and more Data Centre capacity, faster IT systems, and improved efficiency. New corporate and multi-tenant Data Centre facilities are being constructed to support this demand, and existing or legacy Data Centres are being refurbished to achieve improvements in efficiency across both facilities (energy efficiency) and IT (service delivery). Data management, privacy, efficiency, and compliance with corporate, industry and regulatory standards are contributing to a constantly evolving landscape. The need to ensure your infrastructure meets not only the requirements for today but for tomorrow and beyond has never been greater.

EDP Europe builds on its many years of experience, to provide a wealth of knowledge and a broad portfolio of leading edge systems & services to optimise the overall performance of our customers' Data Centres and Enterprise IT environments. From design & build to ongoing operational management, EDP Europe offers technologies and solutions that can support the life-cycle of your critical IT environments to increase efficiency, resiliency, flexibility and security.

EDP Data Centre Solutions Division

EDP Data Centre Solutions specialise in advanced infrastructure solutions and services that focus on optimising the performance and efficiency of critical Data Centre white space environments.

With more than 33 years' experience operating in Data Centre white space EDP DCS has assisted many Data Centres improve their airflow management, enabling them to optimise their cooling and make energy efficiency gains.

Designing, manufacturing and installing modular systems that can be utilised in retrofit, new build or hyperscale projects, operating from sites that enables client support across the world.

Services:

- **Bespoke Aisle Containment Systems**
- **Advanced Raised Access Floors**
- **Structural Ceilings**
- **Custom Designed IT Security Cages**
- **Rack Deployment Services**
- **Data Centre Cleaning**
- **Firestopping**
- **Live Data Centre Floor Replacement**

Thermal Management

Airflow Management

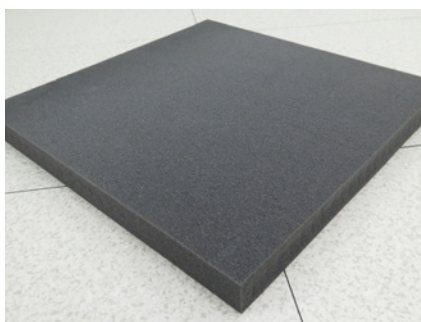
KOLDLOK®



Raised Floor Grommets

- Range of raised floor grommets for sealing cable openings.
- Increases existing cooling unit capacity, by reducing bypass airflow, leading to energy cost savings.
- Increases static pressure under the raised floor and improves cool air delivery through floor grates and perforated tiles.
- Improves equipment reliability and extends equipment life.

RackSEAL Floor



Floor Air Barrier

- Ideal solution for sealing large open areas in Data Centre raised floors.
- Flexible solution provided by perforations enables resizing for smaller openings and around obstacles.
- 600mm x 600mm foam sheet with 25mm x 25mm perforations.
- Fire rating of open cell to UL94 HF1 flame retardancy.

RackSEAL Tile



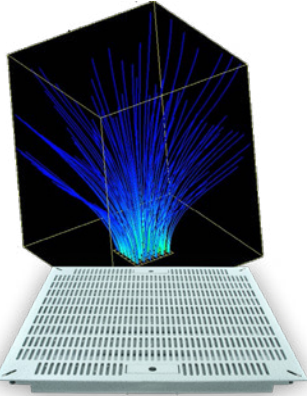
Brush Floor Tiles

- Offers excellent airflow management properties via brush strip covered openings.
- Rapid installation speeds up cabinet deployment.
- Two large openings for optimal cable densities & better cable segmentation.
- Adjustable height via integral corner levellers.
- Works with Data Centre floors from 30mm to 45mm thick.



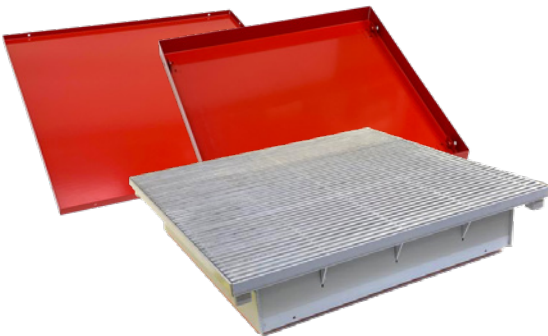
- 3 off 130mm x 130mm brushed cable access positions.
- Length 600mm x Width 600mm x Height 40.4mm.
- Can be adapted to suit all raised flooring systems.
- Powder coated grey as standard.

- Heavy duty 600mm x 600mm x 40.4mm replacement floor tiles.
- Available with single or double cable openings.
- Large brushed cable openings of 470mm x 129mm with removable safety gland plate.
- Powder coated grey as standard.



Advanced Floor Grille

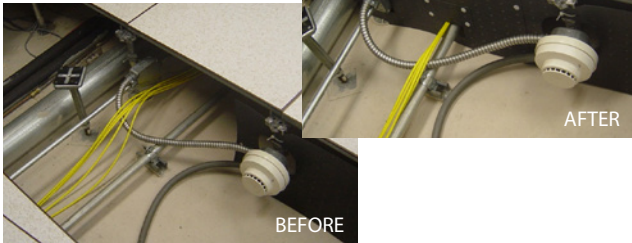
- Standard flat bottom floor grilles have a major design flaw that creates jet stream, short cycling and negative airflow.
- Triad floor grille has specially designed fins and hole pattern that causes the air to “bend” outwardly creating a unique dispersion pattern.
- The design creates better stratification providing cooling for top-of-rack servers.



Floor Grille Covers

- Bespoke cost effective solution for sealing unused floor grilles.
- Improve airflow management and optimise Data Centre cooling efficiency.
- Mitigates against over-provision of cooled air.
- Bright Red colour makes them easy to identify.
- Available to suit any floor grille type.

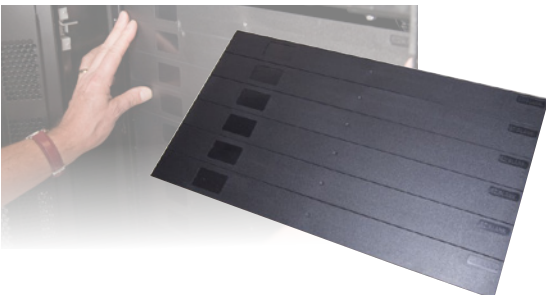
PLENAFORM® Raised Floor Partition System



Under Floor Air Baffle

- Flexible airflow baffle system which can help solve dynamic thermal imbalances in Data Centre raised floor environments.
- Scored both vertically and horizontally so enabling installation to meet any floor height or width requirements.
- Control and balance Data Centre airflow.
- Separate hot aisles from cold aisles.
- Helps reduce energy consumption and operating costs.

EziBlank Keeping IT cool



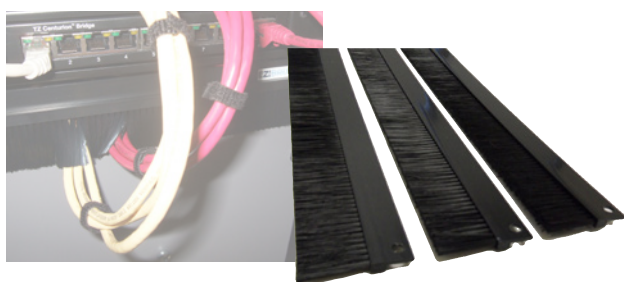
6U Blanking Panels

- EziBlank® blanking panel sheets prevent hot air recirculation, which is one measure to improve CRAC unit efficiency.
- Using EziBlank® blanking panel sheets keeps hot exhaust air away from the cool intake air, extending the life of IT equipment, saving energy and reducing the carbon footprint of the Data Centre.
- 6U EziBlank® blanking panel sheets can be split at 1U intervals.
- Tool-less installation thanks to innovative ‘pop-in clip’ for square hole rails.
- Universal version available with twist latches to work with any 19” mounting rails.



23" & 21" ETSI Blanking Panels

- EziBlank® universal 6RU 23" blanking panels are scored at 1RU intervals and can be snapped to the required rack space size.
- Specially designed twist latches enable the panel to work with any EIA-310-D compliant 23" rack.
- Easy installation with a moulded stud to aid positioning, with twist latches to lock the panel in place.
- Universal 6RU panels also available to fit 19" racks.
- EziBlank® universal 21" 10SU blanking panels are designed for ETSI racks.
- Manufactured from flame retardant ABS plastic with thermoplastic elastomer rubber twist latches.
- Pre-installed with 4 pairs of universal latches at 1st, 4th, 7th and 10th SU. Additional catches available separately.



19" Brush Panels

- EziBlank® brush panels allow cables to pass through without significant airflow leakage.
- Designed and manufactured to the highest International standards.
- Reusable, recyclable and flame retardant.
- Quick and simple to install, each brush strip blanking panel is supplied with mounting screws.



Blanking Panels

- Snap-in blanking panel solution for 19" & 23" racks providing a 99%+ effective seal.
- Reduce hot spots and bypass airflow by preventing exhaust air migrating to the front of the cabinet.
- Unique features that aid fitting and eliminate gaps between adjoining panels or equipment.
- HotLok® 4" Round designed to seal cable entry points in rack cutouts.



Side Rail Sealing Kit

- HotLok® Rack Airflow Management (RAM) Kit is designed to seal the gaps between the rail and side of rack enclosures.
- Helps reduce bypass airflow and prevent hot air recirculation in IT racks.
- Two mounting extrusions and three sealing membrane widths for a "universal fit" in any IT equipment cabinet.
- Customisable application – Can be trimmed for a tailored fit enabling cable passage.

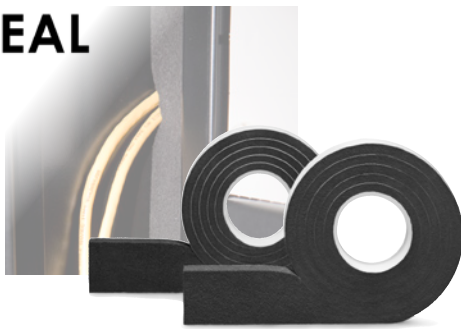
PLENAFILL®
27U Scalable
Blanking Panel



27U Blanking Panel Sheet

- Supplied in boxes of 10 x 27U sheets that are scored at 1U intervals.
- No more guessing how many blanking panels are required.
- Quickly blank off large areas of unused rack space.
- Installs using rivets (order separately).
- Fire rated material (ULVO class 94) that can be easily cut to blank areas of less than 1U.
- Available in dark grey or white.

RackSEAL



Rack Air Barrier

- Self adhesive foam tape air barrier.
- Prevents hot air re-circulating between cabinet sides and rails, between racks or underneath the rack.
- Reduces hot spots caused by hot air recirculation.
- Slow expansion allows RackSEAL air barrier to be installed without disturbing cables.
- Seals around cables.

EziBlank
Keeping IT cool



Rack Replacement Wall

- Designed to maintain important airflow dynamics within the Data Centre when racks are moved from rows.
- 2 piece, stackable design for easier transporting and storage.
- Each module can cover up to 23U or 46U when stacked together.
- Replaces 600mm, 750mm or 800mm racks by simply rotating.
- Quick to assemble from flame retardant, impact resistant, water resistant, twin walled polypropylene 6mm sheet.

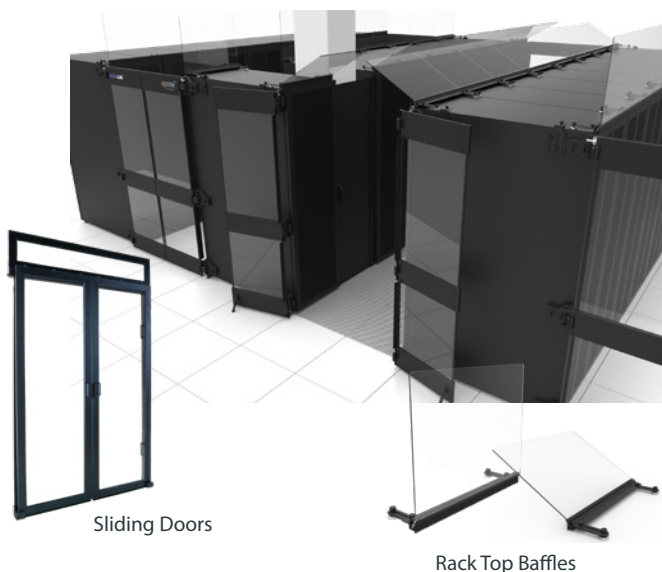
ATISLELOK®



Under Rack Gap Panel

- AisleLok® under rack panel is designed to seal openings below new or existing racks.
- Prevents hot air recirculation under the rack.
- Two widths available to suit 600mm or 800mm wide racks.
- Two versions of tool-less application - simply peel & stick or magnetic.
- Pre-scored lines on the flexible sealing material enables easy removal of excess material.

ATSLELOK® MODULAR CONTAINMENT



Modular Aisle Containment

- AisleLok® Modular Containment provides an out-of-the-box aisle containment solution.
- A non-intrusive mounting system enables rapid deployment in standard rack row aisles.
- Flexible design allows for easy re-configuration as the needs of the Data Centre evolve.
- System comprises of three core components:
 - Rack Top Baffles - For hot or cold aisle isolation.
 - Two types of doors:
 - Bi-Directional Doors - That fit 1,200mm wide aisles.
 - Sliding Doors - Suitable for 42U to 45U high cabinets. Doors are 4' (1,53m) wide with additional sidelights for 6', 7' or 8' aisles (1.83, 2.13 or 2.44m), available in Black or White. Additional Transom windows extend 45U to 50U.
 - Adjustable Rack Gap Panels - Two models available that extend from 27mm to 610mm and from 250mm to 1,500mm to fill spaces between racks such as building supports or missing IT racks.

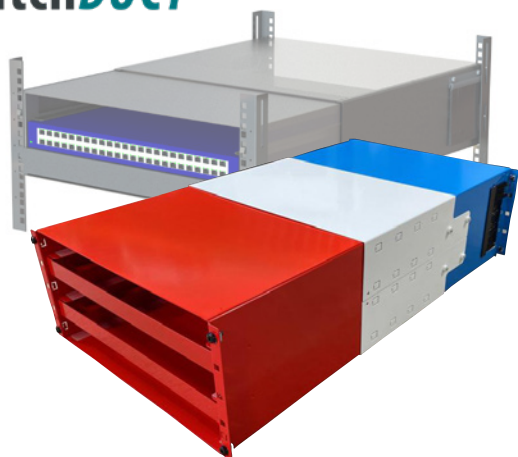
HOTLOK® SwitchFix



Network Switch Cooling

- SwitchFix is specifically designed to provide effective cooling for top of rack network switches.
- Some network switches exhaust hot air out to the front or side of the rack, this can lead to mixing air streams.
- HotLok SwitchFix channel cool air to the network switch and prevents air streams from mixing.
- Passive solution to cool top of rack network switches

SwitchDUCT



- EDP SwitchDuct is a custom-built 3U or 5U switch tunnel that allows switches to be housed in the rear of the rack whilst allowing cold air from the front to cool the switches.
- Adjustable sleeve enables SwitchDuct to be adjusted to fit rail depths of between 500mm to 750mm.
- Blanking panels can be used to blank out unused spaces.
- Allows additional switches to be added without the need to move existing equipment.

Thermal Management

Water / In-Row Cooling



Water Cooled Solutions

- ColdLogik water cooled solutions provide an alternative to traditional air cooled Data Centres.
- Utilising either Rear Door Heat Exchangers or In-Row Coolers hot exhaust air from IT equipment is cooled directly at the rack.
- Water cooling has many benefits that lead to efficiency gains in operational and energy levels.



Heat Exchanger Rear Doors

- ColdLogik heat exchanger rear doors provide an alternative to traditional cooling methods.
- Four models available, capable of cooling heat loads from 29kw and up to 200kw.
- Hot swappable universal fans reducing the need for localised resiliency stock.
- Leak prevention system available for deployment if requested.



In-Row Coolers

- ColdLogik CL80 In-Row Coolers provide an energy efficient way of cooling rows of racks, particularly when coupled with an Aisle Containment system.
- CL80 In-Row is capable of handling up to 80kW total, 67kW sensible cooling per system.
- Two models available: 300mm wide or 600mm wide to utilise white space more efficiently.
- In-Row units comprise a heat exchange coil which utilises chilled water as the cooling medium which is supplied by the external chiller system.
- In-row cooling is an efficient and ideal solution for high density Data Centres without affecting the baseline cooling and humidity control of room based CRAC units.

Power & Monitoring

Power Distribution



Basic PDUs

- Range of high quality, affordable basic Power Distribution Units.
- Models available with UK, IEC-C13, locking IEC-C13, IEC-C19 or Schuko sockets.
- Supplied with 3m mains lead as standard.
- Available in 16Amp or 32Amp, with a variety of termination options including UK, IEC, Schuko or Commando plugs.
- Custom built with a range of options available including: Master fuse, Mini Circuit Breaker (MCB), Residual Current Device (RCD), individually fused C19 & C13 outlets and digital ammeter.

3-Phase PDUs

- 3 Phase PDUs available for high consumption equipment.
- 3 Phase input can be configured with single style or a mixture of outlets per phase.
- Overall current rating can be to 16, 32 or 63Amps.
- Branch circuit protection is offered as either integral fuse or individual re-settable thermal trip per outlet.
- Available in both vertical or horizontal formats.

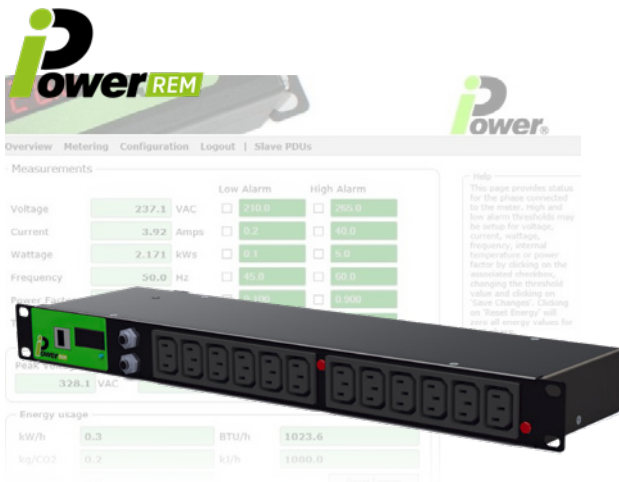
Bespoke Power Solutions

- Custom built power solutions facilitates specially designed power systems to meet individual requirements.
- Specials include Power Splitter box that takes a 63A or 32A power feed and splits it into multiple output feeds.
 - Split a 63A feed into 2 x 32A outlets or 4 x 16A outlets.
 - Split a 32A feed into 2 x 16A outlets.
 - Power splitter box is housed in a robust steel free standing case or can be supplied in a 4U 19" rack mounted enclosure.



Single Outlet Remote PDU

- iBoot G2 is the best single outlet network power switch made. It will automatically reboot crashed systems or let you control power from anywhere, anytime via web browser.
- AutoPing allows iBoot G2 to monitor any IP device on the network and take automatic action whenever the device is down.
- iBoot G2+ provides additional features to expand the G2's capabilities. Two expansion I/O ports that can be used in a variety of ways.
- G2+ allows two additional expansion units to be added to enable independent control of three outlets.
- iBoot G2S adds an internal network switch, while iBoot DC provides a DC power solution.



Intelligent PDUs

- Range of UK manufactured & supported intelligent PDUs.
- Four different models available: IP1 provides overall power monitoring, IP2 also provides outlet monitoring, IP3 adds remote switching and IP4 further adds sequential power.
- Managed via SNMP / HTTP and RS485 Modbus.
- Individually fused IEC outlets.
- Choice of outlets and termination plug including 3-phase, with up to 48 outlets per PDU.
- Daisy chain up to 32 PDUs from a single IP address via Modbus ports.
- PDU Agent SNMP software for consolidating data from multiple iPower units.
- Local TFT display provides an array of monitored readings.
- Accuracy of better than 1%.
- Measure a host of energy measurements including: RMS Volts, RMS Amps, Kw, Frequency, PF, Peak Volts, Peak Amps, kVA, kWh and internal PDU temperature.
- Optional environmental module provides temperature, humidity, dry contact and door security monitoring.

- iPower LITE is a cost-effective, entry-level intelligent PDU that provides a local and remote power monitoring solution.
- iPower LITE intelligent PDUs are fully compatible with existing iPower PDUs and utilise the same HTML/SNMP web browser and software applications.
- Provides overall energy measurement, with e-mail alerts on all set parameters.
- Monitor multiple PDUs on a single IP address.
- Easily configured and setup in minutes.
- Range of socket options.
- Available in vertical or horizontal mounting options.

- iPower REM is a single phase Remote Energy Metering device that provides both local and remote readings over SNMP.
- iPower REM provides a thorough analysis of real time power usage across all connected devices.
- Uses an easy-to-use HTML interface with the ability to set SMS & Email alarms for all critical parameters.
- Can be configured to suit individual requirements. It can be a PDU or an inline device, that will provide remote monitoring for legacy systems.
- iPower REM will work in conjunction with other iPower™ products, to create a fully flexible monitoring system.
- With an accuracy of 1% iPower REM can provide measurements for:-

- Peak Amps
- Peak Volts
- Volts AC
- Amps AC
- VA
- Frequency
- Watts
- Power Factor
- Internal Temperature
- kWh

edp MIDMeter



MID Metering Solution

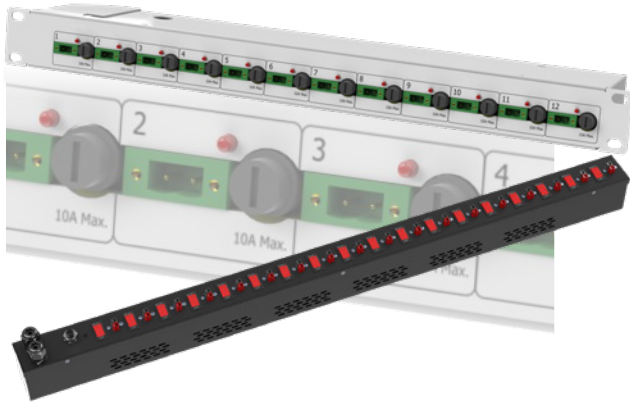
- EDP MIDMeter PDUs meet the EU Measuring Instrument Directive (MID) legislation that governs meters used for billing energy.
- Custom built PDUs can be vertical or horizontal formats with single or dual feeds each with their own MID meter.
- Meters provide dual point metering enabling access via DCIM systems and a Cloud based monitoring and reporting platform.
- The Cloud based software package provides access to real-time measurements of kW hours, power factor efficiency and other active and reactive power information, enabling clients to manage their own consumption.

enLOGIC



Advanced Intelligent PDUs

- enLogic advanced intelligent PDUs with high accuracy metering, futureproof networking and Tool-less hot-swap Network Management Card (NMC).
- High accuracy metering (V, A, VA, kWh, pf) billing grade accuracy.
- IP Cascading with up to 64 PDUs managed through a single IP address.
- NMC with two way DC power sharing for always-on network management and alarms.
- User defined electronic colour coding of NMC for easy power source identification.
- Ultra-low profile design enables easy equipment access.
- Colour coded outlets by circuit breaker makes identification easier and reduces human error.
- 5 Year standard warranty.
- Incorporate environmental monitoring and access control.
- Various models available that deliver PDU metered, PDU metered with outlet switched, outlet metered or outlet metered with outlet switched.



DC Power PDUs

- Bespoke vertical or horizontal DC powered PDUs.
- 24v or 48v PDUs for DC voltage Distribution.
- Each outlet individually fused with fuse-blown indication LED.
- Each individual outlet supports up to 10A.
- Mating plugs have screw connections for easy field termination.



Transfer Switches

- iPower ATS is an Automatic Transfer Switch that provides reliable and precise management of primary and secondary AC power feeds for equipment with a single power connection.
- A new generation intelligent Automatic Transfer Switch, that exceeds the industry standard 21ms transfer time and comes with remote management and analytical tools, to put you in control of your power source infrastructure.
- Uses a HTML graphical interface, with the ability to set SMS and Email alarms for all critical parameters.
- iPower ATS is 16A or 32A rated, with a wide choice of input and output configurations.
- iPower ATS works in Manual mode, where only one feed is required, or in Fully Automatic mode, where the user retains full control and can select the preferred feed using the web interface.
- Full control of the switching state can be selected from the front panel, with status LED's to confirm source and load.



- UPS Bypass Switch enables a UPS to be disconnected without losing power to the device it is supporting.
- The switch provides power to the UPS from the building's main supply.
- Provides seamless switching between mains and backup supply.
- High visibility neon indicators show when the unit is bypass mode.



Locking Power Leads

- Locking power cables prevent accidental removal of power supplies from the attached equipment.
- IEC-Lock cables provide locking at the equipment end of the connection with the option of a locking C14 connection.
- Z-Lock cables are available in a range of options including popular C13-C14 and C19-C20 combinations, where both ends lock.

Power & Monitoring Monitoring



Environmental Monitoring Solutions

- iSensor is a dual powered 1RU device that delivers an environmental monitoring system, capable of monitoring up to 24 iSensorPlus Temperature & Humidity sensors.
- Optional sensors for monitoring dust particles and volt free contacts.
- Set individual thresholds for High and Low Alarms for both Temperature and Humidity on each sensor.
- Monitor over an Ethernet network via web browser to an internal web server, or via SNMP registers.
- Event notification, via e-mail, through SNMP Traps are generated when thresholds are breached or contact status changes.



DCIM Solution

- Sensorium™ is a powerful, flexible and cost-effective DCIM solution.
- Modular Data Centre Infrastructure Management system built around web components that enables the building of bespoke customer, department or operator focused dashboards and home screens.
- Create dynamic icon floor plans that display both the physical location, operating and alarm status's of the IT cabinets using a traffic light red, amber and green system.

Security

Rack Access Control

tz SMARt™
Cabinet Security



Multi Rack Security System

- TZ Centurion is a cost-effective, flexible, and retrofitable rack security system that is easy to implement.
- Retrofits to most racks for complete versatility.
- Real time auditing, tracks and reports on activities and events.
- Options to incorporate monitoring of temperature & humidity into one solution.
- Greater scalability, enables multi-rack locking via one control hub or one controller per rack.
- Reduces compliance & security costs.
- Shape memory alloy locking system, with no generation of electro-magnetic field on TZ SlideHandles.
- Accessed via proximity card or remotely triggered.
- Compatible with Wiegand data stream allowing the use of bio-metric readers.
- Solutions available to work with existing third party building access control systems to extend physical security and audit trail capability down to the cabinet enclosure level.



Rack Security System

- iAccess is a 1RU dual powered, rack-mountable rack access control system that utilises smart card access control technology.
- Internal webserver that can be access via standard web browser.
- Can be integrated into any Data Centre remote management platform (NMS, BMS, DCIM etc.) that uses SNMP to provide a centralised access control system, which also offers a full SNMP Audit Trail.

Infrastructure

Racks & Cabinets



Standard & Bespoke 19" Cabinets

- EDP Europe offers a range of standard and bespoke designed server, network and wall mounted racks.
- No minimum order quantities for bespoke racks.
- Range of options including power, cable management and rack access control. All of which can pre-installed for easier and quicker on-site deployment.
- EDP DC Server Rack is available in three standard heights (42U, 45U, & 47U), two widths (600mm & 800mm) and two depths (1000mm & 1200mm).
- Racks supplied with mesh doors with the option of space-saving wardrobe style doors.
- Range of wall boxes and SOHO racks
- Flat-packed racks are also available for easier siting in difficult to access areas.



19" Cabinets

- USystems' USpace 4210 is range of Comms and Data Centre server racks designed around a 4 post construction that adapts itself to many applications and markets.
- Available in 5 heights, 2 widths, 4 depths as standard, it has a 1500kg (3307lbs) load bearing and a dynamic load rating of 500kg (1102lbs).
- USpace 5210 is a premium range of Data Centre cabinets designed to meet the demands of ever-increasing equipment densities while maintaining benefits in cabling access and ease of installation.
- Built around a lightweight, but sturdy aluminium rigid bolted frame the 5210 is available in 3 heights, 2 widths, 2 depths as standard, and has a 1500kg (3307lbs) static load rating and a dynamic rating of
- 750kg (1653.5lbs).



Co-Location & Chimney Racks

- EDP Europe offers a range of specialist racks such as Chimney Racks or multi-compartment Co-Location racks.
- Co-Location server racks available with 2, 3 or 4 compartments.
- Each compartment is fully independent with ducted cable channels for running power and connectivity.
- Enhance compartment security by adding combination locks or a Rack Access Control system.
- Chimney racks for venting hot exhaust air directly into the return plenum.
- Adjustable chimney section for greater height flexibility when integrating with ceiling plenum.



EDGE

Micro Data Centre Cabinets

- EDGE® Micro Data Centres 'MDC' have been designed to meet the demands of localised computing requirements in offices, warehouses and factories.
- Comprising of a range of managed air-cooled or water-cooled models, there is an MDC for local computing requirements.
 - **EDGE 3** - an air-cooled, soundproof cabinet that is capable of cooling IT loads up to 12kW and reducing equipment noise up to 28.5dBA.
 - **ColdLogik** - Water cooled server racks that are capable of handling heat loads from 29Kw to up to 200Kw.



Charging Cabinets

- Provides an efficient and secure way of centrally managing large volumes of business critical hand-held devices, mobile or tablets used in logistics, transportation, retail and industrial environments.
- Supplied fitted and wired with user specified charger units for all popular makes of hand-held device.
- Fully customisable to suit a range of OEM's equipment including Zebra, Apple and Samsung.
- Fully welded construction, with quick release door with inset acrylic window, and removable rear and side panels.
- Inset shatterproof acrylic window, and integral LED lighting provides easy viewing of charging devices.
- Ergonomically designed with telescopic, anti roll-back drawers for easy access, and vented for increased airflow.
- Fans fitted in the roof panel to extract warm air.
- Vertical cable management in rear of the cabinet.
- Rear mounted power bar for better power cable management, with PSUs consolidated and secured within chassis at rear of shelves.
- Custom colour finishes and branding available.

Infrastructure Peripherals



Battery & Manual Server Lifters

- EDP Server Lifters are ideal for manoeuvring servers and other IT equipment around the Data Centre.
- Models available in either battery or manually operated, with cantilever options available.
- Full range of models with differing height reaches and weight capacities.
- Provides greater operator protection, reducing the risk of injury.
- New Slim-Line range of battery operated server lifters.
- Two series Slim-Line Lite and Slim-Line HD.
- Slim-Line Lite is a lightweight server lift that offers manoeuvrability, intuitive control and stylish appearance, and lift capacities of up to 90Kg.
- The Slim-Line HD is a range of heavy duty battery server lifts with lifting weight capacities of up to 200Kg.

Computer Crash Carts

- EDP lightweight mobile crash cart made from aluminium alloy for a neat and artistic appearance.
- Easily manoeuvrable and stable thanks to five wheel base of which three lock.
- Height adjustable monitor and keyboard tray, suits standing or seated work positions.
- Various models of Ergotron® crash carts available.
- Easily adjusted working position from standing to seated position.
- Some models have large worksurface areas, while others have lockable drawers.

Computer equipment shown is for illustration only and is not included, but can be purchased separately.

Connectivity

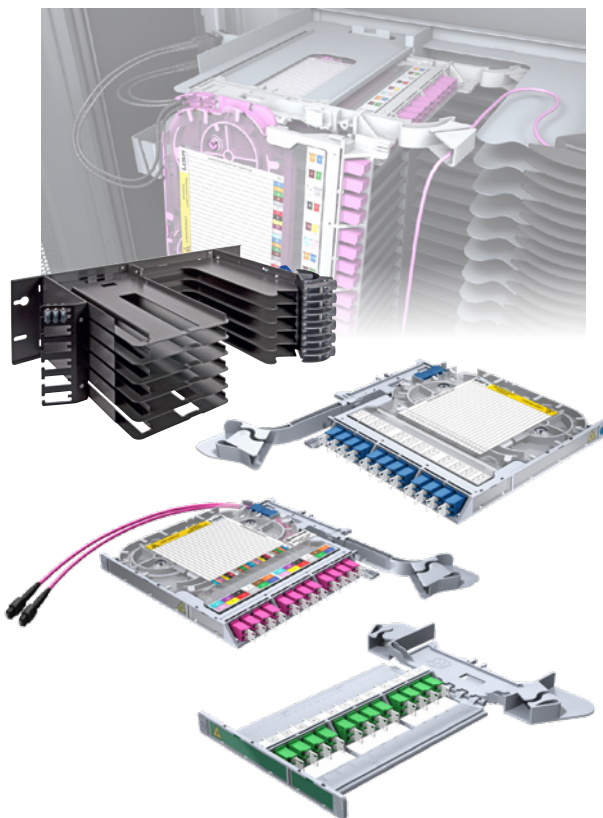
H+S LiSA

HUBER+SUHNER



LiSA CDR - Optical Distribution Frame

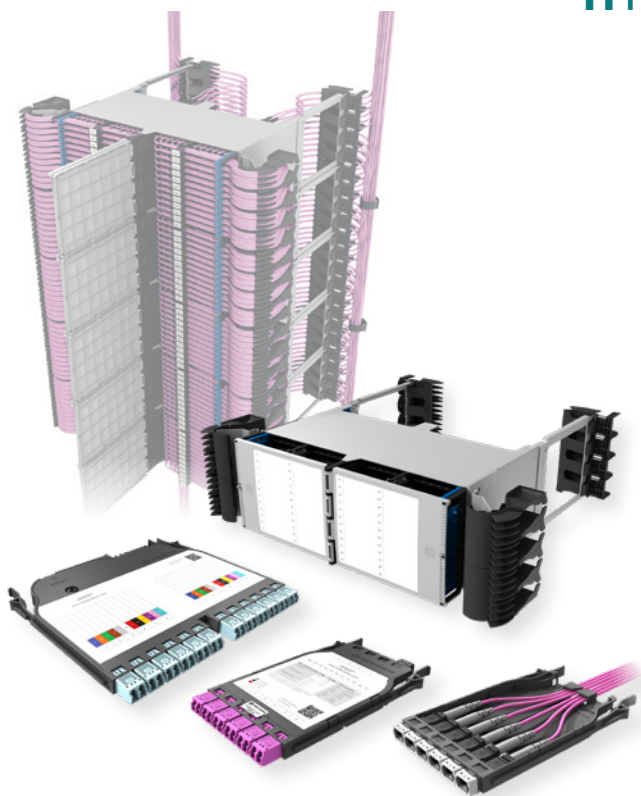
- LiSA CDR (Cable Distribution Rack) is a flexible and scalable fibre management system.
- The compact size provides low footprint costs. CDR's can be placed against walls, end of rack aisles or back to back.
- Its modular C-Shaped design enables easier configuration and accessibility with all components accessed from the front of the rack.
- Flexible, modular and scalable solution for future-proof fibre connectivity.
- Low footprint at only 300mm deep, saving revenue generating space, reducing OPEX.
- High-density population of fibres without compromising performance, reliability or handling.



LiSA Fibre Optic Chassis & Trays

- The LiSA Chassis is available in 5 different U height sizes (1U, 2U, 3U, 6U and 7U).
- Chassis available for left or right configuration in black or grey, and supports up to 72 fibres / 36 duplex LC ports per height unit.
- LiSA Fibre Tray Cassettes are available for splice, patch, transition, splitter or WDM applications
- Trays are quick and simple to install and colour coded for faster, clearer fibre identification.
- Hinge-down fibre tray offers immediate access to internal fibres even during service.
- Incoming fibres and pigtailed are stored in separate areas.
- Bend radius limitation throughout.

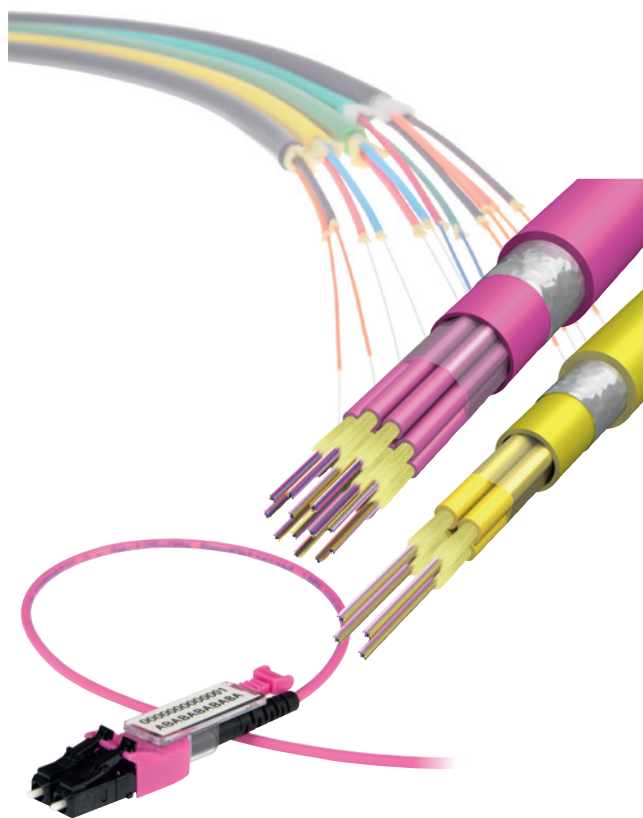
H+S IANOS



IANOS Rack Fibre Management

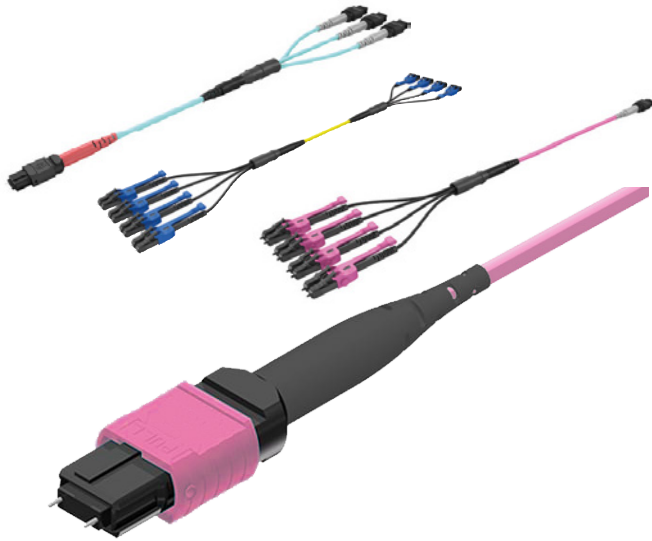
- Class-leading, modular, scalable fibre optic management system, offering fast, flexible and future-proofed fibre connectivity.
- Facilitates Base-2, 8, 12 and 24 pre-terminated cable systems.
- Accommodates a quick, simple and inevitable upgrade path from 10G serial to 40G and 100G parallel optics, or faster.
- Provides up to 72 LC-D or MTP connections in 1U.
- Chassis available in 1U & 4U, with option of a zero U model.
- Modules available as patching modules, transition modules, MTP conversion modules, LC splicing modules and pre-terminated modules.
- Integrated patch cord management and labelling allows for easy Moves, Adds and Changes.

Fibre Cabling



Fibre Installation Cable & Patch Cords

- HUBER+SUHNER offer a wide range of fibre optic cables for indoor, outdoor or universal applications.
- Range includes loose tube, tight tube and breakout cables in OS2 and OM4 fibre types.
- Fibre cables are developed and tested in accordance with international standards, which fulfil high mechanical and thermal conditions as well as fire requirements.
- Fibre breakout cables are available with anything from 12 to 288 fibres in one cable.
- Patch Cords available in various lengths and feature HUBER+SUHNER's LC-XD connector that provides easier handling even in high-density applications, less cable bulk thanks to its single jacket and enables easy polarity changing.



Pre-terminated Fibre Cables

- HUBER+SUHNER pre-terminated fibre cables are designed and manufactured to deliver high performance fibre cable systems enabling increased performance by as much as 50%.
- Pre-terminated fibre cables are available as multi-stranded trunk cables, LC-LC equipment harnesses, MTP-LC transition harnesses, MTP-MTP conversion harnesses and jumper cables.
- Pre-terminated trunk cables now available with US Conec MTP Pro connectors that allow quick and effective polarity and gender re-configuration in the field. Lowering expenditure by reducing the number of cables needed to be kept on-hand.
- Design of the MTP Pro connector reduces the risk of damage to the ferrules, with a longer insertion and extraction sleeve that relieves cable strain and makes handling and mating easier and safer.

Transceivers

HUBER+SUHNER



Fibre Transceivers

- EDP Europe offers a variety of transceivers for Duplex (LC-D) or Parallel (MPO) applications.
- Popular options for Data Centre White Space including: SFP+, SFP28, QSFP28, QSFP-DD and QSFP+.
- Popular models support bandwidths from 10G to 400G.
- Manufactured from top quality materials and components.
- Transceivers to support Singlemode OS2 or MultiMode OM4.

Fibre Cabling

AFL



Fibre Connection Cleaning

- AFL One-Click Cleaners are a push-type fibre cleaner that feature an easy one push action that quickly and effectively cleans the end-face of fibre connectors on jumpers or through adapters.
- Effective on a variety of contaminants including dust and oils.
- Each clean is performed with fresh cleaning tape.
- Compliant with EU/95/2002/EC Directive (RoHS).
- Several models available for a variety of single and multi-fibre connectors.

Fibre Splicing



- Fujikura is a leading manufacturer of fusion splicers and fibre cleavers designed to produce the high-quality splices required by modern fibre networks.
- Fujikura fusion splicers are resistant to shock, dust and moisture.
- The 90S+ is a single fibre core alignment fusion splicer that set a new standard in the market for fusion splicing.
- The 90S+'s features are designed with the objective of enabling the user to work faster with higher precision.
- The Fujikura 45S is the latest addition to the Fujikura range of fusion splicers. The 45S is feature-rich, compact V-groove clad alignment fusion splicer that has substantial performance.
- Fujikura CT-08 and CT-50 fibre cleavers prepare the fibres to provide consistently good results.
- The Fujikura RS02 / RS03 is an ergonomically designed ribbon fibre stripper that provides easier handling and makes ribbon fibre stripping easier to do.
- Spares such as cleaver blades, splicer clamps, electrodes and heat shrink protection sleeves are also available.

Fibre Network Testing



Fibre Cable Testing

- AFL designs test and inspection tools that are easy to use and provide quick results, without complicated training requirements.
- Fibre Optic Inspection & Cleaning - Complete range of fast, easy-to-use tools that inspect and clean fibre endfaces.
- Fibre Identification - Visual Fault Locators and Live Fibre Identifiers for installing, activating and maintaining fibre optic networks.
- Optical Loss Testing - Optical Power Meters, Light Sources, and test kits for checking the health of fibre networks.
- OTDR - OTDRs and fault locators for certifying new fibre installation and locating faults in deployed fibre networks.
- Test Manager & Reporting Software - Cloud or PC based reporting tools that provide actionable intelligence and workflow management for the individual to the enterprise.

Advanced Infrastructure Solutions & Services

EDP Data Centre Solutions specialise in advanced infrastructure solutions and services that focus on optimising the performance and efficiency of critical Data Centre white space environments.



Bespoke Aisle Containment

EDP Data Centre Solutions designs, manufactures and installs bespoke aisle containment systems for use in retrofit, new build and Hyperscale projects.

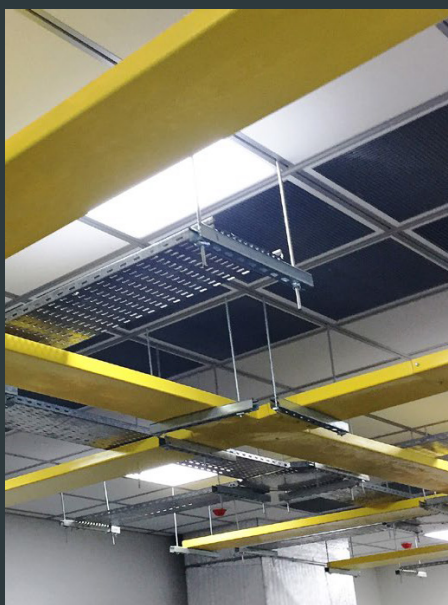
- Non-intrusive, bespoke and retrofitting solution, that can be used in new build, retrofit or Hyperscale projects in Enterprise or Co-Location Data Centres.
- Scalable & Modular, systems can be floor standing or suspended from ceiling.
- Custom designed solutions that use infill panels to seal round obstacles, differing rack heights or maintaining gaps for future rack expansion.
- Advanced door system with greater stability and full 1200mm to 1800mm aisle opening for improved access.
- FM Approved roof panels on CAC systems that drop away in the event of a fire allowing fire suppression systems to access the aisle.



Bergvik Iso Floor

Unlike traditional pedestal raised floors, Bergvik Iso Floor utilises a steel sub-structure that is self-supporting and independent from the floor panel system. As the floor panels are not required to provide lateral stability it enables greater access to plenum infrastructure and services during installation and maintenance.

- Full stability from 300mm – 2100mm FFH.
- Can be installed in two deployments due to the sub-structure being rigid and self-supporting.
- Standard floor panel size is 600x600mm but to achieve full optimisation of floor space panels are available from 315-1200mm.
- Floor optimisation enables up to 25% more server racks on the same floor space, in comparison to traditional raised floors.
- Heavy equipment can be support directly by the sub-structure.
- Up to 70% fewer pedestals than a traditional raised access floor.
- Two grounding points can ground 100m² of Bergvik Iso Floor.



Bergvik Iso Flex-Grid

Bergvik Iso Flex-Grid is an engineered, dual purpose structural ceiling system that acts as a dropped air ceiling plenum, as well as a support grid, combined with a drop-down ceiling.

- Continuous M10 threaded interface for infrastructure support.
- Designed for optimum stiffness.
- Variable ceiling grid.
- Natural anodised aluminium finish as standard, with optional powder coat finishes as required.
- Dual purpose offers both a load bearing grid with a drop-down ceiling.
- Cost effective solution as no need for additional suspension points.
- Extremely flexible, allows countless overhead suspension points in all directions.
- Not dependant on server rack location or dimensions.
- Provides a cost-effective platform for future expansions.



Data Centre Critical Services

EDP DCS provides mission critical cleaning and protection services to protect your facility.

From post construction cleaning through to providing structural fire protection, EDP DCS offers a range of services to maintain the health of your Data Centre.

- Post construction cleaning to deliver a clean environment prior to deployment of IT equipment.
- Deep technical cleans including cleaning of racks, IT equipment and servers.
- Clinical cleans to ISO14644-1:2015.
- Cleaning of ceiling voids or sub-floor plenums.
- High level cleaning of trunking, ducting, tray works and lighting systems.
- Specialised deep cleaning.
- Air particle testing and reporting.
- Zinc whisker collection, testing, identification, and remediation.

**Find out more about EDP Data Centre Solutions by visiting
www.edpeurope.com/dcs**



EDP Europe Limited

Unit 4, Europa Park
Croft Way
Witham
Essex CM8 2FN

Tel: 01376 510337

Email: sales@edpeurope.com

www.edpeurope.com

