

IPOWER ACU

ADVANCED CONTROL UNIT PDU

iPower ACU is a 3rd generation of advanced intelligent power solutions designed to aid Data Centre management.

iPower ACU has an Advanced Control Unit that features an improved processor which enables new features into the iPower PDU series. With USB2.0 ports, full HTTPs and SNMPv3 functionality, IPv4 and IPv6 support and a full colour touch LCD panel iPower ACU still provides previous features including three-phase metering, up to 48 switched/monitored outlets, humidity/temperature sensor, a bus of 8 temperature only sensors and full wiegand reader door lock control and monitoring.

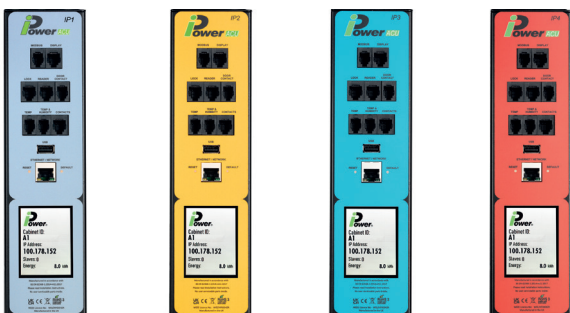
iPower ACU consists of four models:

- **IP1** - iPower IP1 provides overall energy monitoring and can be built as an in-line meter or as a multi-socket power strip.
- **IP2** - iPower IP2 provides overall and per socket energy monitoring and is available as a multi-socket powerstrip with up to 48 outlets.
- **IP3** - iPower IP3 builds on iPower IP2 by also adding individual remote socket switching.
- **IP4** - iPower IP4 adds user configurable sequential / programmable start-up to the specification of the iPower IP3.

iPower ACU can be manufactured as a single, dual or 3-Phase unit capable of handling loads up to 125Amps. Multi-socket PDUs can incorporate any type of socket and mains lead termination.

Environmental ports allow the connection of Temperature and Humidity sensors, Security ports for Access Control, Volt Free Contacts and a USB port. Units can be daisy-chained so up to 32 devices can be monitored via a single IP address.

The TFT display provides local power information or the PDU can be remotely monitored through the network port via the internal web browser or over SNMP and Telnet, plus others.



PRODUCT OVERVIEW



Features & Benefits

- Single, Dual or Three Phase Monitoring
- Overall Energy Measurement up to 125A
- Accuracy of better than 1%
- Set Alerts for all critical metrics
- Send Alerts via Email or SNMP Traps
- Easily configured and setup in minutes
- Simple migration to full DCIM using MiB File.
- Ethernet Port, Full 10/100Base-T Network Compatibility (HTTP, HTTPS, HTML, SNMP v2 v3, IP v4 v6, NTP, Telnet, Syslog, CGI, SMTP)
- Local Display
- Environmental Ports for Temperature and Humidity Sensors
- Access Control Ports for Electronic Door Handles / Pinpads / Card Readers and Door Contacts
- Volt Free Contacts (3 sets of Volt Free Contacts for Connection of Accessories)
- USB Port (for Web Camera, Auto Config, and 5VDC PSU)
- Modbus Ports for Daisy Chaining up to 32 PDUs from a single IP Address
- Remote Display Port to connect an additional display for hard to access PDUs
- Hot Swappable Control Card

Overall Energy Measurements

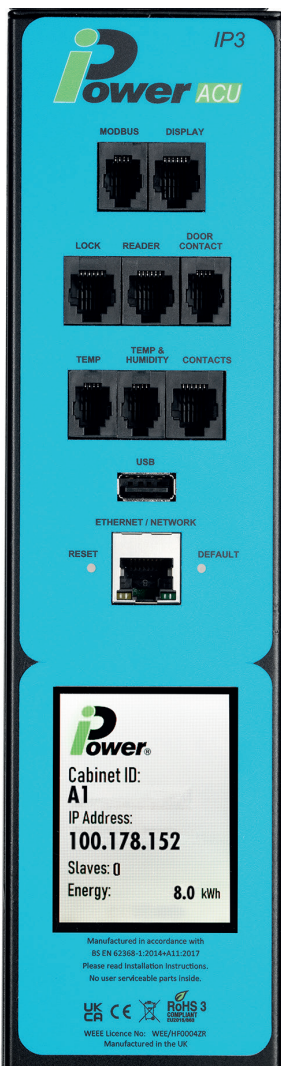
With an accuracy of better than 1% include:

- Amps
- kWh
- VA
- Volts
- Watts
- Power Factor
- Frequency
- kVA
- Peak Volts
- Peak Amps
- Kg/CO²
- KJ/H
- BTU/H
- Internal Temperature



On screen guide makes installation simple

Each of the inbuilt HTML pages contain instructions to guide you through the setup process and explains how to set traps and alerts for critical parameters.



Environmental & Security Metrics

- Up to 8 Temperature sensors
- Single Temperature / Humidity sensor
- 3 sets of dry contacts
- Cabinet door lock
- Card reader
- Door open sensor
- Remote Display
- MOD BUS port
- USB Port
- USB Camera
- Particle detector

Additional Features & Benefits

Additional Features & Benefits for iPower IP2, IP3 & IP4

- Individual Socket Monitoring (Amps, kWh, VA)
- Individual Remote Socket Switching on iPower IP3 (Fail On) & IP4
- Sequential / Programmable Start-up on iPower IP4

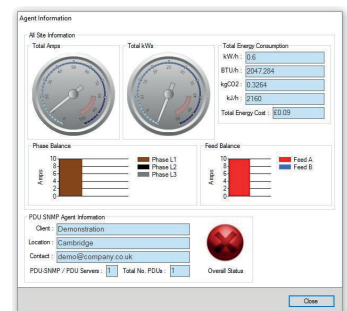
Per Socket Energy Measurements Include:

- Amps
- kWh
- VA

PDU Agent™ Management Software

Consolidate all your readings with PDUAgent.

Entry level management platform with easy to use dashboard layout lets you log measurements and events from multiple iPower® products for historical evaluation and to collate and produce accurate usage reports.



Ver: EDPIPACU0224.1

Tel: 01376 510337 - E-mail: sales@edpeurope.com